

technix

rubber and plastics ltd

tuff tread

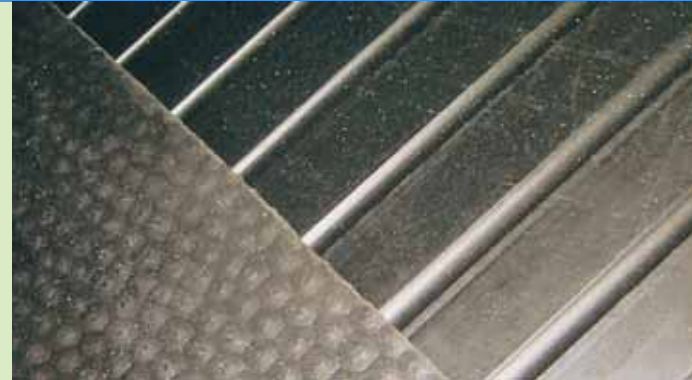
save on bedding costs
reduce mucking-out time
cut down on vets' bills
protect against injury

key features

1. Can save up to 75% on bedding costs
2. Protects against cold, dampness & leg injuries
3. Does not absorb odour or moisture
4. Will not slide around on the floor
5. Deeply-grooved surface is easy to keep clean
5. Economical & comfort

suitable applications

- Stable flooring, trailer flooring, aisle ways, grooming areas, tack room and hay storage areas.



- Mats to Remove Dirt from shoes
- Well and Foyer Matting
- Mats to Remove Moisture & Dirt from Shoes
- Mats to Remove Moisture from Shoes
- Anti Static Mats
- Solid Top Anti Fatigue Mats
- Anti Slip Matting
- Anti Fatigue Matting Rubber
- Anti Fatigue Matting Plastic
- Rubber Matting & Flooring
- Leisure Matting
- Anti Slip Surfacing
- Decontamination Mats
- Logo Printed Mats
- Wet Pour Safety Surfacing
- Mats to Remove Dirt from shoes
- Well and Foyer Matting
- Mats to Remove Moisture & Dirt from Shoes
- Mats to Remove Moisture from Shoes
- Anti Static Mats
- Solid Top Anti Fatigue Mats
- Anti Slip Matting
- Anti Fatigue Matting Rubber
- Anti Fatigue Matting Plastic
- Rubber Matting & Flooring
- Leisure Matting
- Anti Slip Surfacing
- Decontamination Mats
- Logo Printed Mats
- Wet Pour Safety Surfacing
- Mats to Remove Dirt from shoes
- Well and Foyer Matting
- Mats to Remove Moisture & Dirt from Shoes
- Mats to Remove Moisture from Shoes
- Anti Static Mats
- Solid Top Anti Fatigue Mats
- Anti Slip Matting
- Anti Fatigue Matting Rubber
- Anti Fatigue Matting Plastic
- Rubber Matting & Flooring
- Leisure Matting
- Anti Slip Surfacing
- Decontamination Mats
- Logo Printed Mats
- Wet Pour Safety Surfacing

Poor Moderate Good Excellent



product data

Material: Rubber
Appearance: Wide rib/Hammer profile
Tensile St.: 1340 psi
Elongation: 57%
Shore A: 65
Shore D: 40 points
Tear St.: 34 pli
Bashore Resiliance: 14%
Comp Set: 22h/70°C 62%

installation & cleaning

Installation: Loose lay
Cleaning: Brush/mop the top surface

nominal size

Sizes 4' x 6' Thickness:
Lite 10mm
Standard 12mm
Heavy Duty 17mm
Colours: Black

we accept



freephone 0800 216633

Unit 14, Botbings Industrial Estate, Hillsons Road, Botley, Southampton
Hampshire, SO30 2DY, United Kingdom
tel: +44 (0) 1489 789944 fax: +44 (0) 1489 798866 web: www.technix-rubber.com
E-mail: sales@technix-rubber.com



Certificate number 1569/97

TECHNIX TUFF-TREAD

For the duration of the last 13 years Tuff-Tread rubber flooring has been manufactured for an infinite amount of uses. Tuff-Tread is now a main feature in many of the prestigious Stables throughout the UK and other regions. This product has proven to be an asset with many advantages, these include amongst others: Reduction in cleaning labour, improved hygiene and less injuries occur due to installation of Tuff-Tread in the slippery, wet conditions that stables offer. When Considering Tuff-tread for your Stables, here are a few helpful things to look for:

SAFETY.

Tuff-Tread is a non-slip product which can be easily cleaned and Maintained.

APPLICATIONS

Tuff-tread mats have been specifically designed to withstand exceptional heavy loads e.g. Horses, Cows, ice skates, golf, cricket and running spikes, weightlifting equipment, beer barrels, cylinders, building materials, heavy engineering equipment, etc.

HYGIENE.

Tuff-tread is primarily used around Horses and livestock. It is made of solid rubber mass, therefore there is nowhere for Bacteria to breed, which in turn could lead to the wide spread of infection, which could be costly.

HEAVYDUTY AND HARDWEARING.

As Tuff-tread will generally be used underfoot, it has a high load bearing resistance. The Weight per square Metre needs to be that of a higher proportion, to that of the load to which it supports to stop the rubber flooring from slipping. The weight also enables resilient wear over long periods of use.

A 6ft x 4ft Tuff-tread weighs over 40kg.

ASSURANCE OF THE PRODUCT

Make sure suppliers can give you relevant information as to the origin of the mat and also produce a manufacturer's guarantee.

TECHNIX TUFF-TREAD INSTALLATION GUIDE

The mats will arrive at your chosen location on a pallet and can be unloaded by hand or with the aid of a fork lift truck.

Prior to installation, the mats should be cleaned and disinfected thoroughly.

The mats should be loose laid cobblestone upwards.

The Tuff-tread surface has been designed to give maximum grip all the while making it simple to clean.

- 1) Lay the Tuff-tread in the stable, commencing at the door and marking the areas that need to be cut.
- 2) To cut the Tuff-tread to size, you may use a sharp knife or Electric jigsaw
- 3) When joining two edges together, run a bead of silicone on the outer edge of the mat and but up to the wall.

we accept



freephone 0800 216633

Unit 14, Bottings Industrial Estate, Hillsons Road, Botley, Southampton

Hampshire, SO30 2DY, United Kingdom

tel: +44 (0) 1489 789944 fax: +44 (0) 1489 798866 web: www.technix-rubber.com

E-mail: sales@technix-rubber.com



Certificate number 1569/97

- Mats to Remove Dirt from shoes
- Well and Foyer Matting
- Mats to Remove Moisture & Dirt from Shoes
- Mats to Remove Moisture from Shoes
- Anti Static Mats
- Solid Top Anti Fatigue Mats
- Anti Slip Matting
- Anti Fatigue Matting Rubber
- Anti Fatigue Matting Plastic
- Rubber Matting & Flooring
- Leisure Matting
- Anti Slip Surfacing
- Decontamination Mats
- Logo Printed Mats
- Wet Pour Safety Surfacing
- Mats to Remove Dirt from shoes
- Well and Foyer Matting
- Mats to Remove Moisture & Dirt from Shoes
- Mats to Remove Moisture from Shoes
- Anti Static Mats
- Solid Top Anti Fatigue Mats
- Anti Slip Matting
- Anti Fatigue Matting Rubber
- Anti Fatigue Matting Plastic
- Rubber Matting & Flooring
- Leisure Matting
- Anti Slip Surfacing
- Decontamination Mats
- Logo Printed Mats
- Wet Pour Safety Surfacing
- Mats to Remove Dirt from shoes
- Well and Foyer Matting
- Mats to Remove Moisture & Dirt from Shoes
- Mats to Remove Moisture from Shoes
- Anti Static Mats
- Solid Top Anti Fatigue Mats
- Anti Slip Matting
- Anti Fatigue Matting Rubber
- Anti Fatigue Matting Plastic